

DESCRIPTION

CHIMNEY CONNECTIONS FOR PELLETT STOVES <SPKP>

Chimney connections for pellet stoves are made of mild steel sheet type DC01, thickness 1,2 mm (according to norm PN-EN1856-2:2009).

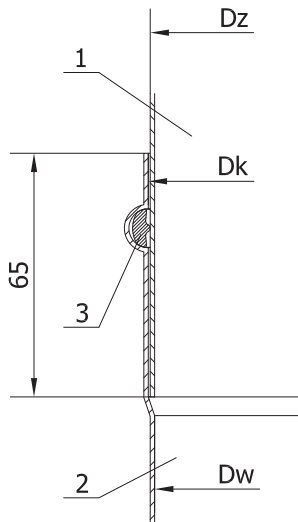
Their application is smoke extraction from pellet stoves, where the fumes temperature can rise to 250°C.

Maximum working temperature – 250°C



BELL JOINT PIPE CONNECTION

Individual elements of the chimney system are being joint by the way of pushing one part of the element - a spigot, into the other press-formed part of the element - a bell. Thanks to this type of pipe joining, chimney connection is characterized by very tight and stiff construction. It also assures proper flow of condensate. In order to prevent the fumes from leaking, special silicone seals are used in the bell joint of the pipe. Elements are powder coated with special high temperature paint (400°C) in black matt colour (both inside and outside).



- 1. Spigot
- 2. Bell
- 3. Silicone seal



Fig. Method of joining chimney connection pipe elements

TABLE OF LAYOUTS AND SIZES

Diameter DN	Dz	Dw	Dk=DN
80	80.1	77.7	81.1
100	100.2	97.8	101.2

MEASUREMENTS

Dz - outer diameter of pipe [mm]
Dw - inner diameter [mm]
Dk - outer diameter of spigot [mm]

DESTINATION

D - smoke ducts from pellets stoves

MODEL OF APPLICATION OF ELEMENTS

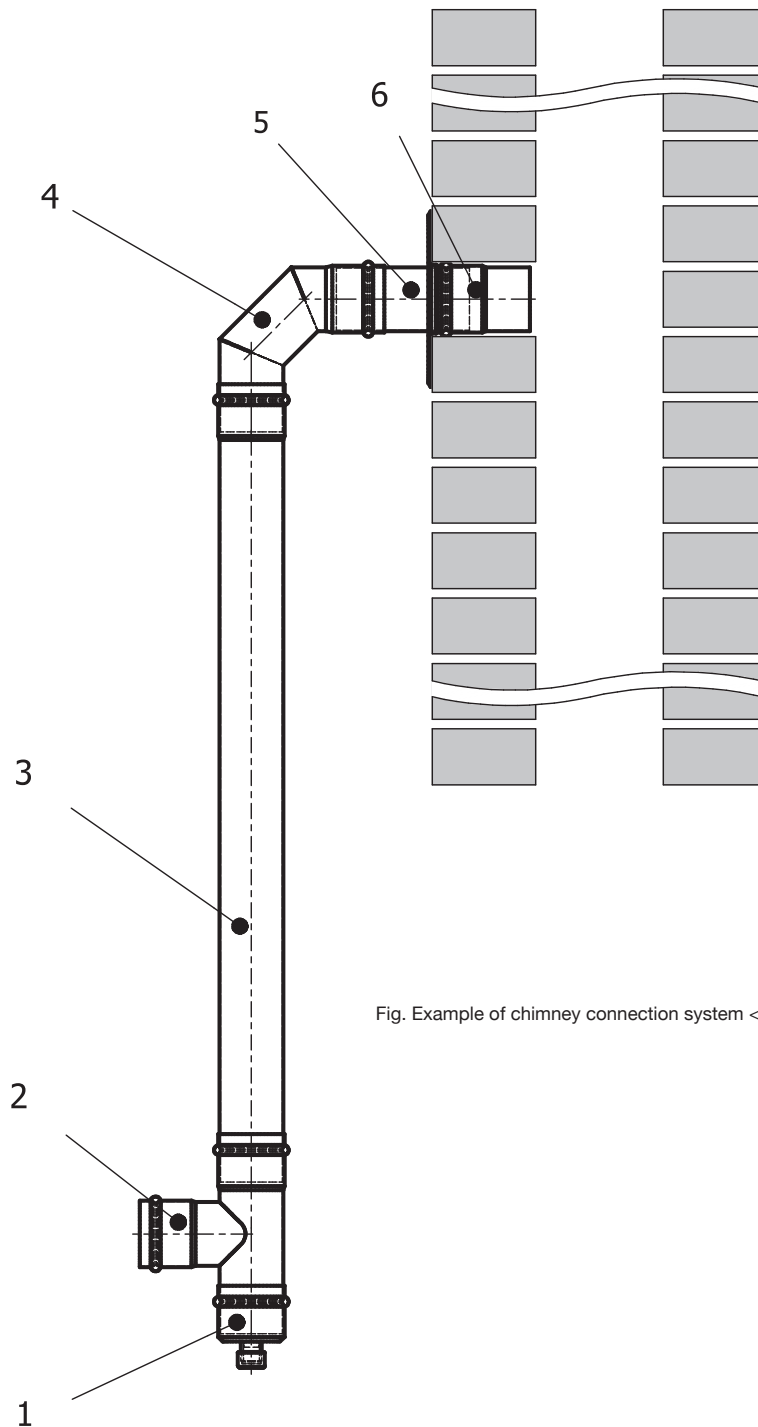


Fig. Example of chimney connection system <SPKP>

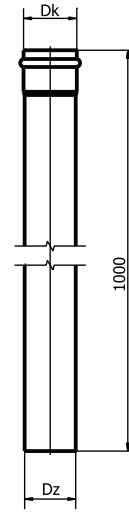
Pos	Name	Denotation
1	Drain bowl	MS80-CZ1,2
2	Tee 90°	TR80/90-CZ1,2
3	Straight pipe 1000 [mm]	RP80/100-CZ1,2
4	Solid elbow 90°	KS80/90-CZ1,2
5	Male connector	ZM80-CZ1,2
6	Rosette	ROZ80-CZ1,2

1. STRAIGHT PIPE 1000 [MM] RP

PICTURE



MEASUREMENTS

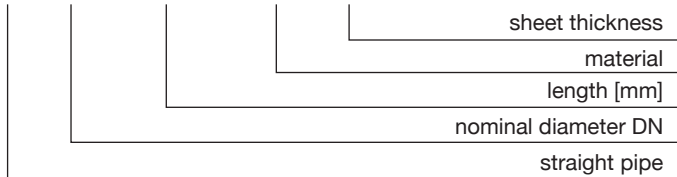


RP

Diameter DN	Ø80	Ø100
dz	80.1	100.2
Dk	81.1	101.2
Weight [kg]	2.40	2.95

DENOTATIONS / PRODUCT CODES

RP x / 1000 - CZ 1,2P



MATERIALS

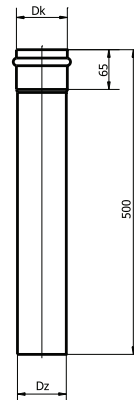
Destination	D	D - smoke ducts
Material	CZ	CZ - mild steel DC01
Sheet thickness s	1,2	1,2 - sheet thickness 1,2 mm

2. STRAIGHT PIPE 500 [MM] RP

PICTURE



MEASUREMENTS

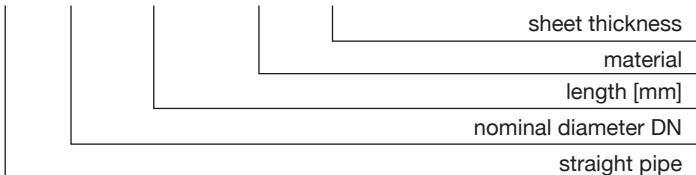


RP

Diameter DN	Ø80	Ø100
dz	80.1	100.2
Dk	81.1	101.2
Weight [kg]	1.20	1.50

DENOTATIONS / PRODUCT CODES

RP x / 500 - CZ 1,2P



MATERIALS

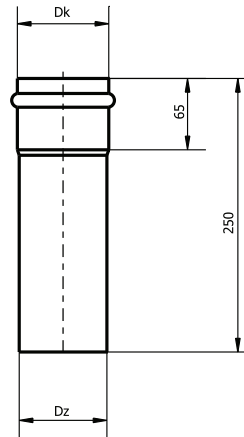
Destination	D	D - smoke ducts
Material	CZ	CZ - mild steel DC01
Sheet thickness s	1,2	1,2 - sheet thickness 1,2 mm

3. STRAIGHT PIPE 250 [MM] RP

PICTURE



MEASUREMENTS

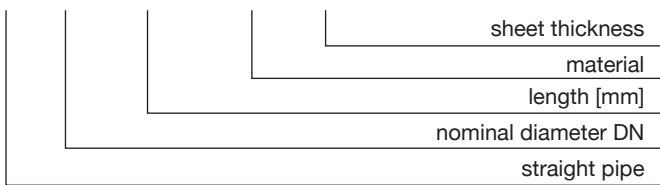


RP

Diameter DN	Ø80	Ø100
dz	80.1	100.2
Dk	81.1	101.2
Weight [kg]	0.60	0.75

DENOTATIONS / PRODUCT CODES

RP x / 250 - CZ 1,2P



MATERIALS

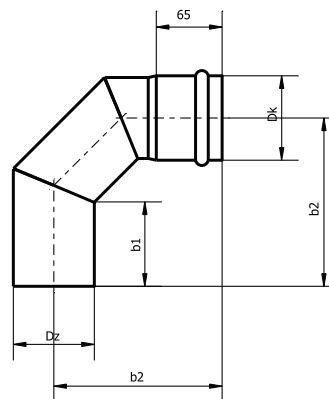
Destination	D	D - smoke ducts
Material	CZ	CZ - mild steel DC01
Sheet thickness s	1,2	1,2 - sheet thickness 1,2 mm

4. SOLID ELBOW 90° KS/90

PICTURE



MEASUREMENTS

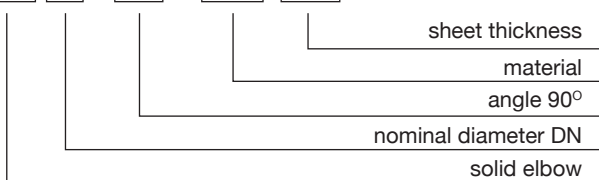


KS/90

Diameter DN	Ø80	Ø100
dz [mm]	80.1	100.2
Dk [mm]	81.1	101.2
b1 [mm]	83.0	79.0
b2 [mm]	166.0	165.0
Weight [kg]	0.70	0.90

DENOTATIONS / PRODUCT CODES

KS x / 90 - CZ 1,2P



MATERIALS

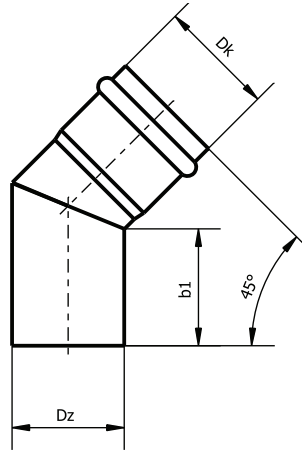
Destination	D	D - smoke ducts
Material	CZ	CZ - mild steel DC01
Sheet thickness s	1,2	1,2 - sheet thickness 1,2 mm

5. SOLID ELBOW 45° KS/45

PICTURE



MEASUREMENTS

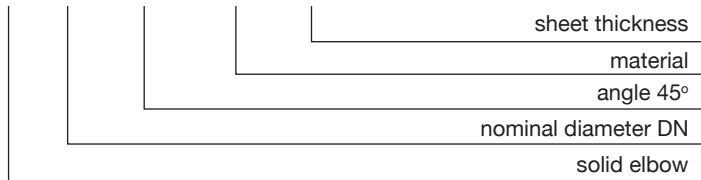


KS/45

Diameter DN	Ø80	Ø100
dz [mm]	80.1	100.2
Dk [mm]	81.1	101.2
b1 [mm]	83.0	79.0
Weight [kg]	0.50	0.65

DENOTATIONS / PRODUCT CODES

KS x / **45** - **CZ** 1,2P



MATERIALS

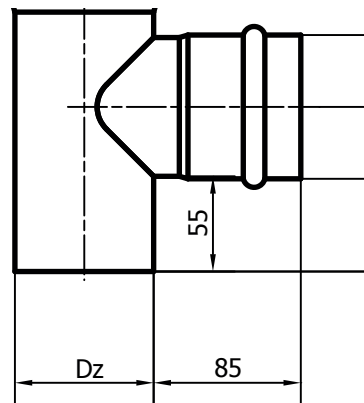
Destination	D	D - smoke ducts
Material	CZ	CZ - mild steel DC01
Sheet thickness s	1,2	1,2 - sheet thickness 1,2 mm

6. TEE 90° TR/90

PICTURE



MEASUREMENTS

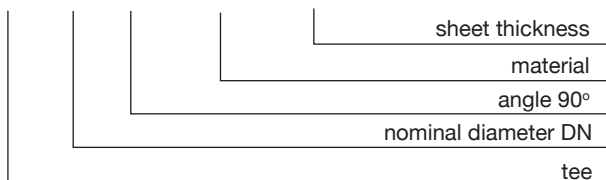


TR/90

Diameter DN	Ø80	Ø100
dz [mm]	80.1	100.2
Dk [mm]	80.6	100.7
H [mm]	220	240
h1 [mm]	95	240
Weight [kg]	0.85	1.15

DENOTATIONS / PRODUCT CODES

TR x / **90** - **CZ** 1,2P



MATERIALS

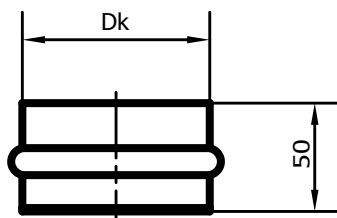
Destination	D	D - smoke ducts
Material	CZ	CZ - mild steel DC01
Sheet thickness s	1,2	1,2 - sheet thickness 1,2 mm

7. BOWL/PLUG MS

PICTURE



MEASUREMENTS



MS

Diameter DN	Ø80	Ø100
Dk	80.6	100.7
Weight [kg]	0.25	0.35

DENOTATIONS / PRODUCT CODES

MS **x** - **CZ** **1,2P**

sheet thickness

material

nominal diameter DN

bowl/plug

MATERIALS

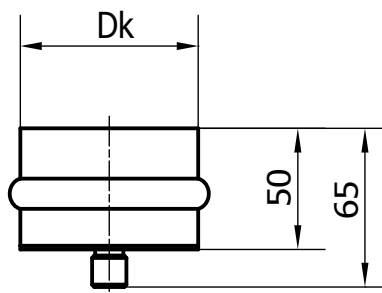
Destination	D	D - smoke ducts
Material	CZ	CZ - mild steel DC01
Sheet thickness s	1,2	1,2 - sheet thickness 1,2 mm

8. DRAIN BOWL

PICTURE



MEASUREMENTS



MS

Diameter DN	Ø80	Ø100
Dk [mm]	80.6	100.7
Weight [kg]	0.40	0.50

DENOTATIONS / PRODUCT CODES

MS **x** - **CZ** **1,2P**

sheet thickness

material

nominal diameter DN

bowl

MATERIALS

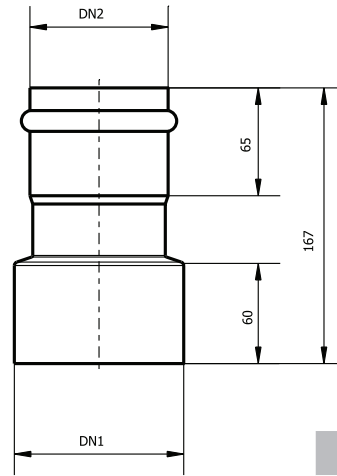
Destination	D	D - smoke ducts
Material	CZ	CZ - mild steel DC01
Sheet thickness s	1,2	1,2 - sheet thickness 1,2 mm

9. REDUCER RD

PICTURE



MEASUREMENTS

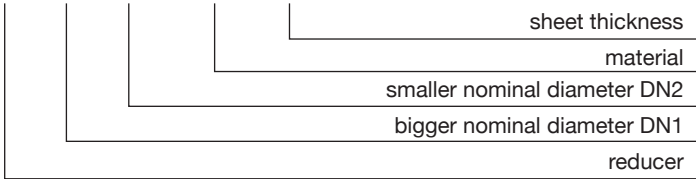


RD

Diameter DN1/DN2	80/100	100/80
Weight [kg]	0.50	0.50

DENOTATIONS / PRODUCT CODES

RD x / y - **CZ** 1,2P



MATERIALS

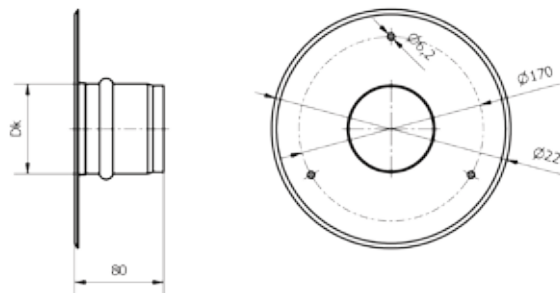
Destination	D	D - smoke ducts
Material	CZ	CZ - mild steel DC01
Sheet thickness s	1,2	1,2 - sheet thickness 1,2 mm

10. ROSETTE ROZ

PICTURE



MEASUREMENTS

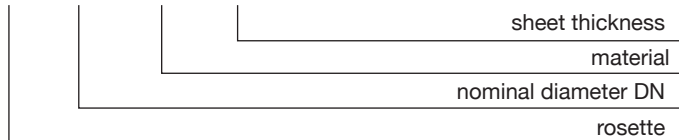


ROZ

Diameter DN	Ø80	Ø100
Dk [mm]	80.6	100.7
Weight [kg]	0.60	0.80

DENOTATIONS / PRODUCT CODES

ROZ x - **CZ** 1,2P

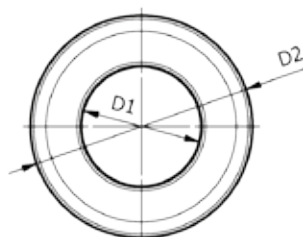


MATERIALS

Destination	D	D - smoke ducts
Material	CZ	CZ - mild steel DC01
Sheet thickness s	1,2	1,2 - sheet thickness 1,2 mm

11. ROSETTE ROZ II

PICTURE

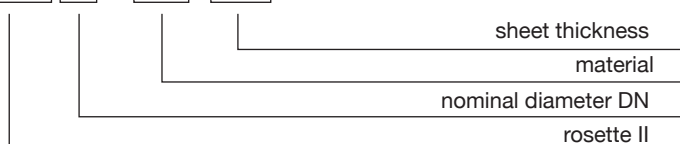


ROZ

Diameter DN	Ø80	Ø100
D1 [mm]	80.8	100.8
D2 [mm]	150	170
Weight [kg]	0.12	0.14

DENOTATIONS / PRODUCT CODES

ROZII x - CZ 1,2P



MATERIALS

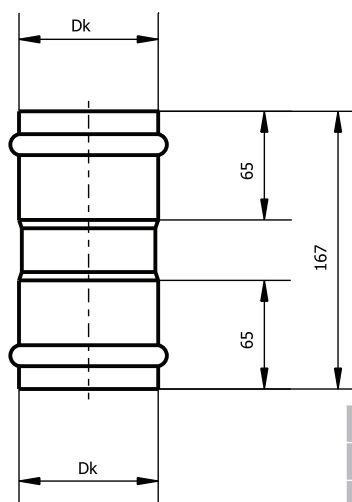
Destination	D	D - smoke ducts
Material	CZ	CZ - mild steel DC01
Sheet thickness s	1,2	1,2 - sheet thickness 1,2 mm

12. FEMALE CONNECTOR ZZ

PICTURE



MEASUREMENTS

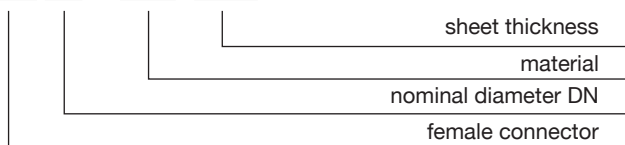


ZZ

Diameter DN	Ø80	Ø100
Dk	81.1	101.2
Weight [kg]	0.45	0.55

DENOTATIONS / PRODUCT CODES

ZZ x - CZ 1,2P



MATERIALS

Destination	D	D - smoke ducts
Material	CZ	CZ - mild steel DC01
Sheet thickness s	1,2	1,2 - sheet thickness 1,2 mm

CAUTION!

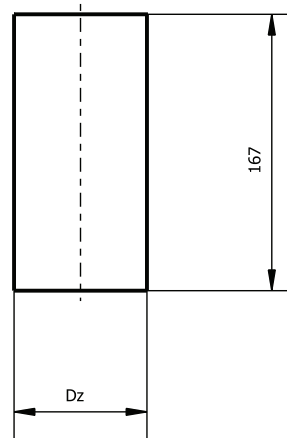
Female connector allows to connect two spigot sided elements of the system for example due to a cut-to-size necessity

13. MALE CONNECTOR ZM

PICTURE



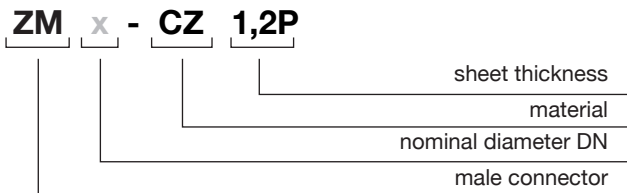
MEASUREMENTS



ZM

Diameter DN	Ø80	Ø100
Dz	80.1	101.2
Weight [kg]	0.40	0.50

DENOTATIONS / PRODUCT CODES



MATERIALS

Destination	D	D - smoke ducts
Material	CZ	CZ - mild steel DC01
Sheet thickness s	1,2	1,2 - sheet thickness 1,2 mm

CAUTION!

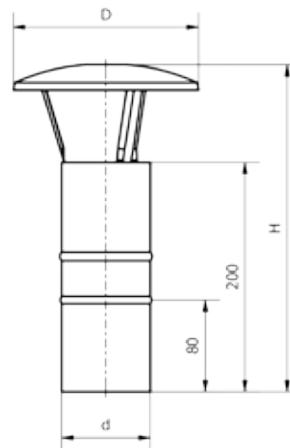
Male connector allows to connect elements of the system with two bell-type sides and divert the connection schema.

13. CAP DK

PICTURE



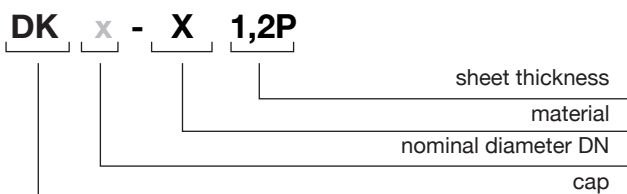
MEASUREMENTS



DK

Diameter DN	Ø80	Ø100
d [mm]	77.2	96.9
D [mm]	160	220
H [mm]	285	220
Weight [kg]	0.31	0.44

DENOTATIONS / PRODUCT CODES



MATERIALS

Destination	D	D - smoke ducts
Material	CH	CH-stainless steel 1.4404 powder coated black colour
Sheet thickness s	5	5 - sheet thickness 0,5 mm